

Date: 07<sup>th</sup> April 2025



# TECH TOOL RELEASE NOTES

Version 2.8.320



**Volvo Group**

© Copyright AB Volvo 2025, inc. All rights reserved. Volvo is a registered trademark of Volvogroup.com, inc., as are other names and marks. Other marks appearing herein may be trademarks of their respective owners.



# Contents

TECH TOOL RELEASE NOTES 2.8.320 .....	2
<b>Overview</b> .....	2
<b>Limitations / Challenges</b> .....	2
<b>Recommended Actions</b> .....	2
<b>Prerequisites</b> .....	3
<b>Fixed Issues</b> .....	4
<b>Operation Changes in The Release</b> .....	5
<b>Diagnostic Changes in the Release</b> .....	7
<b>Known Issues and Workarounds</b> .....	8



# TECH TOOL RELEASE NOTES 2.8.320

## Overview

These release notes give you an overview of new features and changes in Tech Tool. Please take your time to read through this news carefully as it will support having the full benefit of new features and changes in this version of Tech Tool.

Tech Tool release 2.8.320 is available for download in the Client Update from week 15, 2025.

## Limitations / Challenges

1. Restarting Tech Tool daily is recommended to free up resources and improve the application performance.
2. It is recommended to perform 'Finish work' at the end of a connected product session before connecting to the next product. This will speed up the process of connecting to the next product.

## Recommended Actions

1. Before initiating Tech Tool installation via Client Update, ensure that all the Windows updates have been completed. Otherwise, Windows Update might cause the computer to restart, which may lead to the reinstallation of Tech Tool.
2. Restart the computer after installing Tech Tool for both a fresh installation and an update via Client Update.



# Prerequisites

1. Users must have their User Principal Name (UPN) details available to match their corresponding existing user ID for logging into Tech Tool. This information will be necessary for logging into Tech Tool following the installation of version 2.8.210 and above.
  - Internal users under Volvo Corporate Network (VCN) should use their corporate email addresses.
  - External users should use their Tech Tool user ID followed by @ext.volvogroup.com (Example: UserID@ext.volvogroup.com).
2. \*.msapproxy.net must be added to the whitelist without SSL inspection. Please reach out to your local IT administrator to carry out this whitelisting procedure.
3. The **2010 port (https)** must be accessible for all traffic. Please contact your local IT administrator to open the port and then proceed with restarting the installation. **Port enabling is necessary only for users downloading and installing Tech Tool through Web/ISO.** However, it's not applicable for CLUP updates.



## Fixed Issues

Description	Brands
The issue of delayed product connection when using the Nexiq USB-Link 3 has been improved. Applicable for North America.	VTC RT MACK
The Error 181 encountered during programming operations has been successfully resolved.	RT



## Operation Changes in The Release

Operation	Changes	Brands	Models
<b>23016-3/2387-08-03-01</b> Cylinder Balancing	Operation has been updated with clarification text mentioning that it will take some time before cylinder balancing values are reset. This reset is delayed only when enhanced cylinder balancing with four rail levels is used.	VTC ✓  RT ✓  VBC ✓	FH, FM  C, K, T, T HIGH, D WIDE  B11R, B13R
<b>17029-3</b> Sensor and Parameter values, graph viewer	Operation has been updated and is now available for Compact Crawl Excavator models.	VCE ✓	ECR25DL, EC37F, ECR40F, ECR50F, ECR58F, JEC18F, JECR18F
<b>17600-3</b> Low voltage service mode, control	Operation has been updated and is now available for Crawl Excavator model.	VCE ✓	JEC230F
<b>17938-3</b> Cooling and heating system, filling	Operation has been updated and is now available for Crawl Excavator model.	VCE ✓	JEC230F
<b>26288-3</b> Three-way valve	Operation has been updated and is now available for Crawl Excavator model.	VCE ✓	JEC230F



Operation	Changes	Brands	Models
<b>30003-3</b> Battery classification, test	Operation has been updated and is now available for Crawl Excavator model.	VCE ✓	JEC230F
<b>36981-3</b> Electric propulsion cooling system	Operation has been updated and is now available for Crawl Excavator model.	VCE ✓	JEC230F
<b>36001-3</b> Electric propulsion system, monitoring	Operation has been updated and is now available for Crawl Excavator model.	VCE ✓	EC230EL
<b>22166-3/2219-08-03-02</b> Control Valve, variable oil pump	Operation has been updated with new Engine rpm range for 13L engine with EM-JPN 25.	UD ✓	UD-HD2, UD-HD3
<b>72204-3/7229-07-03-01</b> Load Sensor	Operation has been enabled.	UD ✓	CF, CZ
<b>39824-3/3989-08-03-02</b> Telematics connectivity, check and activation, test	Operation has been enabled.	UD ✓	UD-HD2, UD-HD3, CF, CZ, UD-MDE UD-HDE
<b>3646-08-03-08/36019-3</b> Driver/passenger door control panel	Operation has been disabled.	UD ✓	UD-HD2, UD-HD3, CF, CZ



## Diagnostic Changes in the Release

Diagnostic	Changes	Brands	Models
Diagnostic Update	Symptoms based diagnostic support has been enabled in HMD for Engine, consumption and transmission SBD's.	VTC ✓ RT ✓	FL (3), C, K, T, T HIGH, D WIDE, D-Narrow
Diagnostic Update	Diagnostic support has been updated by disabling the impact links for UD products in Tech Tool.	UD ✓	UD-MDE, UD-HDE, UD-HD2/3, CF-CZ, UD-MD, UD-HD.





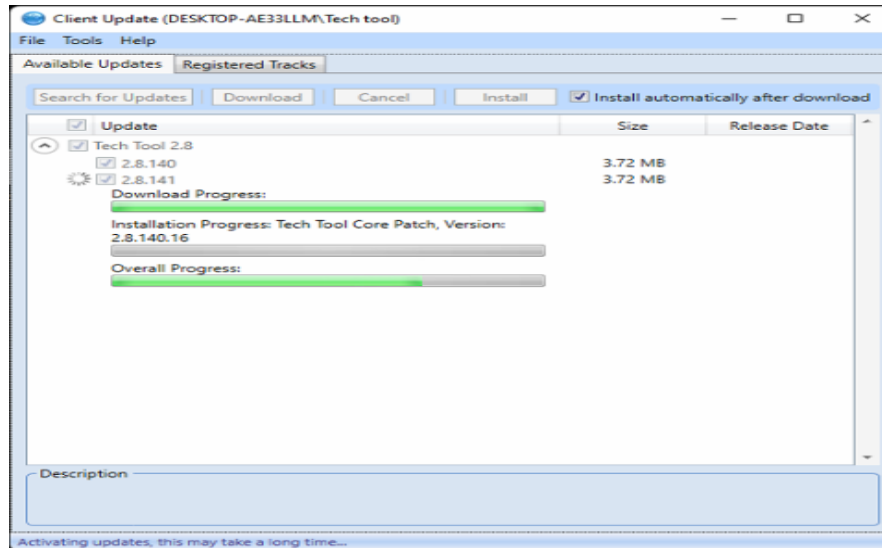
## Known Issues and Workarounds

Issue No:	Issue Description	Brands
1.	Tech Tool installation progress bar is frozen during Client Update.	ALL
2.	While programming, the software download might get stuck at 99%.	ALL
3.	While switching between the tabs, Tech Tool might be frozen, or an error pop-up is displayed.	ALL
4.	Inconsistent behaviour in loading J1939 DTCs (Vendor ECUs) in Diagnose tab.	ALL
5.	Operation number is missing for 3690-07-03-02 Wireless sensor gateway (WSGW) calibration operation. <b>Note:</b> Applicable only to North America model VN (4).	VTC
6.	Under test operation 87923-3 Cab Heating Circuit Components, <ul style="list-style-type: none"><li>• Graph readout for Cab climate coolant pump speed is missing. However, there is a digital readout on the right-hand side.</li><li>• If the truck does not have the solenoid valve for the de-aeration (air bleeding), then the air bleed valve position will return "Not available"</li><li>• Ambiguous status phrases for Cab coolant direction three-way valve position. ("Short circuit", "Mix circuit" and "Long circuit" will be replaced by "Short loop", "Mix loop" and "Long loop" respectively)</li><li>• Wrong Component location illustration for the water valve stepper motor in Selection C.</li></ul>	VTC (FHE, FME)
7.	Error 236 observed during the programming operation.	ALL



## **Issue-1: Tech Tool installation progress bar is frozen during Client Update.**

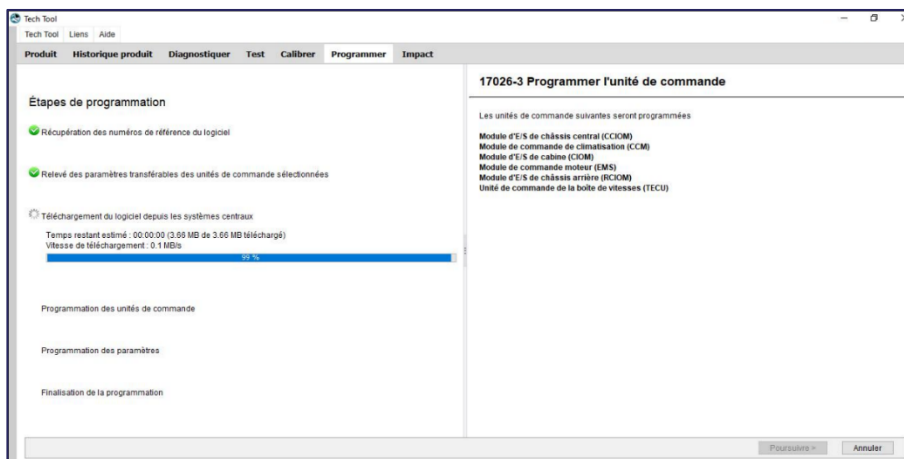
**Cause:** Under Investigation.



**Suggestion:** Restart computer if the progress bar is frozen.

## **Issue-2: While programming, the software download might get stuck at 99%.**

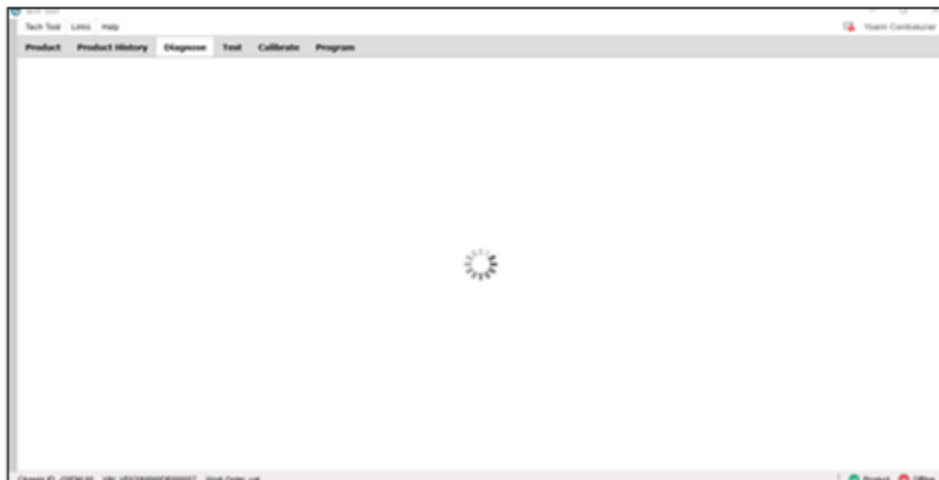
**Cause:** Under Investigation.



**Suggestion:** Use Quick Repair tool to resolve this issue. Refer [Video](#).

**Issue-3: While switching between the tabs, Tech Tool might be frozen.**

**Cause:** Under Investigation.



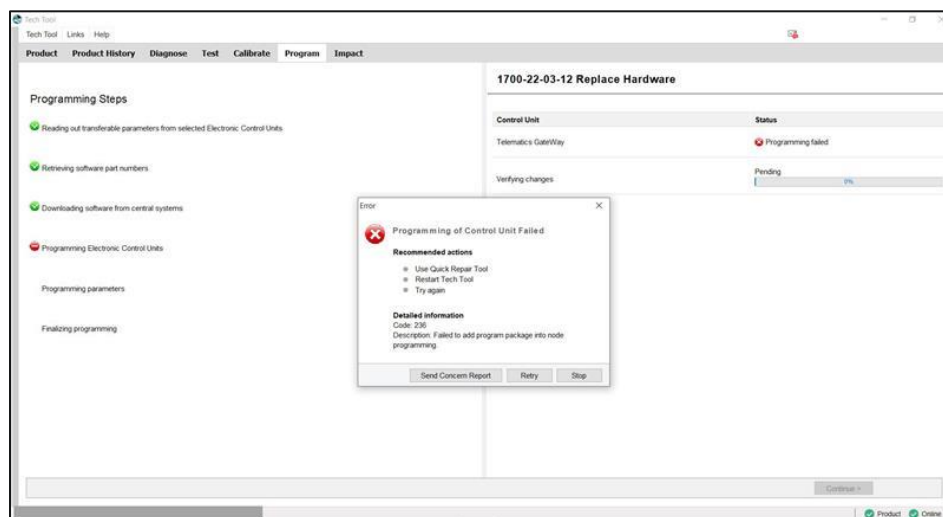
**Suggestion:** Kindly follow the below steps:

1. Ensure that there is a stable network as shown in the icon
2. Restart Tech Tool.
3. If not able to recover, restart the computer.

**Issue-4: Inconsistent behavior in loading J1939 DTCs (Vendor ECUs) in Diagnose tab.**

**Cause:** Under Investigation.

**Suggestion:** No workaround

**Issue-7: Error 236 observed during the programming operation.****Cause:** Under Investigation.**Suggestion:** Use Quick Repair tool to resolve this issue. Refer [Video](#).**Note:** For any issues & support, kindly use your normal channels.