

Date: 26th February 2025



TECH TOOL RELEASE NOTES

Version 2.8.310



Volvo Group

© Copyright AB Volvo 2025, inc. All rights reserved. Volvo is a registered trademark of Volvogroup.com, inc., as are other names and marks. Other marks appearing herein may be trademarks of their respective owners.



Contents

TECH TOOL RELEASE NOTES 2.8.310	2
Overview	2
Limitations / Challenges	2
Recommended Actions	2
Prerequisites	3
What's New	4
Operation Changes in The Release	5
Diagnostic Changes in the Release	10
Known Issues and Workarounds	12



TECH TOOL RELEASE NOTES 2.8.310

Overview

These release notes give you an overview of new features and changes in Tech Tool. Please take your time to read through this news carefully as it will support having the full benefit of new features and changes in this version of Tech Tool.

Tech Tool release 2.8.310 is available for download in the Client Update from **week 09, 2025.**

Limitations / Challenges

1. Restarting Tech Tool daily is recommended to free up resources and improve the application performance.
2. It is recommended to perform 'Finish work' at the end of a connected product session before connecting to the next product. This will speed up the process of connecting to the next product.

Recommended Actions

1. Before initiating Tech Tool installation via Client Update, ensure that all the Windows updates have been completed. Otherwise, Windows Update might cause the computer to restart, which may lead to the reinstallation of Tech Tool.
2. Restart the computer after installing Tech Tool for both a fresh installation and an update via Client Update.



Prerequisites

1. Users must have their User Principal Name (UPN) details available to match their corresponding existing user ID for logging into Tech Tool. This information will be necessary for logging into Tech Tool following the installation of version 2.8.210 and above.
 - Internal users under Volvo Corporate Network (VCN) should use their corporate email addresses.
 - External users should use their Tech Tool user ID followed by @ext.volvogroup.com (Example: UserID@ext.volvogroup.com).
2. *.msapproxy.net must be added to the whitelist without SSL inspection. Please reach out to your local IT administrator to carry out this whitelisting procedure.
3. The **2010 port (https)** must be accessible for all traffic. Please contact your local IT administrator to open the port and then proceed with restarting the installation. **Port enabling is necessary only for users downloading and installing Tech Tool through Web/ISO.** However, it's not applicable for CLUP updates.



What's New

Description	Brands
Updated contact information is now available in the Tech Tool Help menu.	ALL
The Impact tab in Tech Tool is not visible when connected to a UD product.	UD
Enhanced error handling for programming operations by implementing unique error codes and providing detailed instructions.	ALL

Fixed Issues

Description	Brands
Resolved the issue where the Email ID was not populating when submitting a concern report from TechTool	VCE



Operation Changes in The Release

Operation	Changes	Brands	Models
25846-3/2589-08-03-05 SCR System (Test A)	Operation has been updated by improving the test description / result for Euro6 Step E only with Bosch Urea system.	ALL	ALL
1700-08-03-33 Function Parameter Reset	Operation has been updated for engine oil reset. Only applicable for North America.	VTC ✓	VN (4)
3522-08-03-01 Headlamp heating element check	Operation has been updated by removing the headlamp heating element operation graph. Only applicable for North America.	VTC ✓	VN (4)
1700-08-03-05 Vehicle Life and Trip, Report	Operation has been updated by adding new parameter for OBD Data selection B, concerning the number of warm-ups since DTC cleared. Only applicable for North America.	VTC ✓	VN (4)
3600-07-03-02 Add or Remove Key Fobs	Operation has been updated and simplified the procedure for adding or removing key fobs for Push Start variant trucks.	VTC ✓	VN (4)
20005-3 Fuel consumption data	Operations have been enabled for Tier 4f Stage 5 for EM-STA5 emission.	VTC ✓	FE (3)



Operation	Changes	Brands	Models
20006-3 Engine statistics data	Operations have been enabled for Tier 4f Stage 5 for EM-STA5 emission.	VTC ✓	FE (3)
21006-3 Cylinder compression	Operations have been enabled for Tier 4f Stage 5 for EM-STA5 emission.	VTC ✓	FE (3)
21081-3 Engine speed and PTO, test	Operations have been enabled for Tier 4f Stage 5 for EM-STA5 emission.	VTC ✓	FE (3)
22001-3 Oil pressure test (during cranking)	Operations have been enabled for Tier 4f Stage 5 for EM-STA5 emission.	VTC ✓	FE (3)
23016-3 Cylinder balancing	Operations have been enabled for Tier 4f Stage 5 for EM-STA5 emission.	VTC ✓	FE (3)
23021-3 Fuel consumption, check	Operations have been enabled for Tier 4f Stage 5 for EM-STA5 emission.	VTC ✓	FE (3)
23040-2 Fuel pump flow compensation	Operations have been enabled for Tier 4f Stage 5 for EM-STA5 emission.	VTC ✓	FE (3)
23754-3 Injectors	Operations have been enabled for Tier 4f Stage 5 for EM-STA5 emission.	VTC ✓	FE (3)
23766-3 Common rail pressure release	Operations have been enabled for Tier 4f Stage 5 for EM-STA5 emission.	VTC ✓	FE (3)
25003-3 Boost pressure, test	Operations have been enabled for Tier 4f Stage 5 for EM-STA5 emission.	VTC ✓	FE (3)



Operation	Changes	Brands	Models
25005-3 Response, test	Operations have been enabled for Tier 4f Stage 5 for EM-STA5 emission	VTC ✓	FE (3)
25006-3 Intake and exhaust system, check	Operations have been enabled for Tier 4f Stage 5 for EM-STA5 emission.	VTC ✓	FE (3)
25351-2 Response, exhaust pressure	Operations have been enabled for Tier 4f Stage 5 for EM-STA5 emission.	VTC ✓	FE (3)
25857-3 AdBlue crystallization catalytic muffler, regeneration	Operations have been enabled for Tier 4f Stage 5 for EM-STA5 emission.	VTC ✓	FE (3)
28420-3 Flywheel and camshaft signal	Operations have been enabled for Tier 4f Stage 5 for EM-STA5 emission.	VTC ✓	FE (3)
3600-08-03-01 Flexible Switches	Operation has been enabled.	VTC ✓	VN (4)
8750-06-03-03 Parking Heater Function	Operation has been enabled.	VTC ✓	VN (4)
8790-08-03-01 Parking Cooler	Operation has been enabled.	VTC ✓	VN (4)
3690-07-03-02 Wireless sensor gateway (WSGW), calibration	Wireless Sensor Gateway (WSGW) calibration to correct the parameter mismatch DTC U3000-54 and commission or recommission range extenders.	VTC ✓	VN (4)



Operation	Changes	Brands	Models
87923-3 Cab Heating Circuit Components	Operation has been enabled to make sure that the cab heating circuit components are working as expected.	VTC ✓	FHE (4), FME (4)
23016-3 / 2387-08-03-01 Cylinder Balancing	Operation has been updated by adding information about the four rail pressure offset levels in description. Two erratic bar graph values have been fixed.	VTC ✓ VBC ✓ RT ✓	FH (4), FM (4) B11R, B13R C, K, T, T HIGH, D WIDE,
2551-08-03-02 Variable Geometry Turbo Function	Operation has been updated by improving the test routine which holds the actuator in the closed and open positions for several seconds to detect actuator stuck error. Applicable to OBD2019 to current VGT engines. Applicable only for North America.	VTC ✓ MACK ✓	Volvo and MACK models
Operation Update	Operations support have been updated with support for CEA2+ architecture.	VCE ✓	Asphalt Compactor model: PT125C
Operation Update	Operations support have been updated with support for CEA2+ architecture.	VCE ✓	Soil Compactor models: SD45B, SD75B
Operation News	Operations support have been added.	VCE ✓	Rigid Hauler model: R70E



Operation	Changes	Brands	Models
22166-3 Control Valve, variable oil pump	Operation has been updated for engine speed operation range EM-JPN 25, ENG-VE13.	UD	UD-HD3



Diagnostic Changes in the Release

Diagnostic	Changes	Brands	Models
Diagnostic Update	Diagnostic content has been updated for the CCM panel symptoms-based fault tracing as well for the DTCs.	VTC ✓	FME (4), FHE (4)
Diagnostic Update	Diagnostic support has been updated by enabling HMD datalink FT.	VTC ✓ RT ✓	VNRe DE
Diagnostic News	Diagnostic content has been added.	VCE ✓	Crawl Excavator model: EC230FCN
Diagnostic News	Diagnostic content has been added.	VCE ✓	Soil Compactor model: SD125B
Diagnostic Update	Diagnostic content has been updated with smart diagram.	VCE ✓	Crawl Excavator models: EC400F, EC500F
Diagnostic Update	Diagnostic content has been updated to support TEA2 plus architecture.	VCE ✓	Crawl Excavator models: EC210FCN, EC220FCN, EC230FCN
Diagnostic Update	Diagnostic content has been updated to support Co-Pilot 2.0.	VCE ✓	Wheeled Excavator models: EW140E, EW150E



Diagnostic	Changes	Brands	Models
Diagnostic Update	Diagnostic content has been updated to support Co-Pilot 2.0.	VCE	Crawl Excavator models: EC350E, EC380E, EC480E, EC530E, EC550E, EC750E, EC950F, EC220E, EC230EL, EC250E, EC300E, ECR235E, ECR355E, EC140E, EC160E, EC180E, EC200E, ECR145E
Diagnostic Update	Diagnostic content has been updated for coolant level sensor DTCs.	UD	UD-HDE



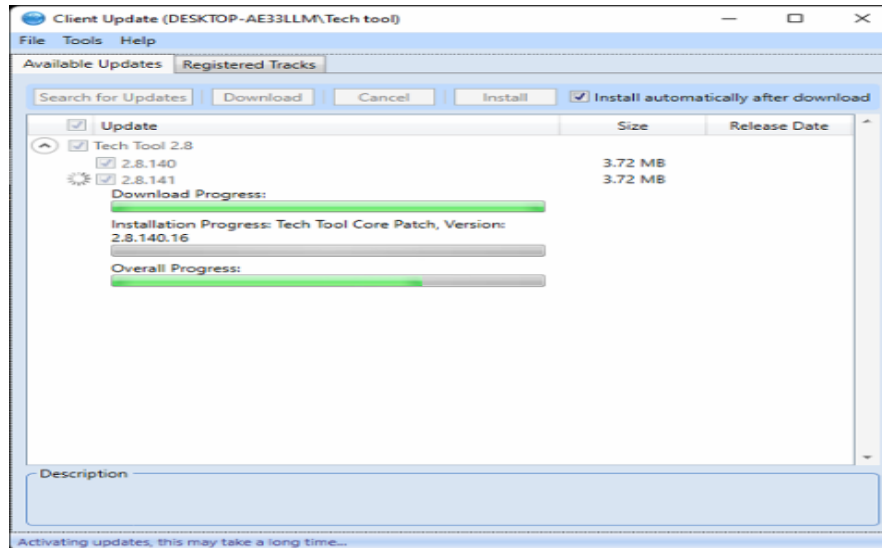
Known Issues and Workarounds

Issue No:	Issue Description	Brands
1.	Tech Tool installation progress bar is frozen during Client Update.	ALL
2.	While programming, the software download might get stuck at 99%.	ALL
3.	While switching between the tabs, Tech Tool might be frozen, or an error pop-up is displayed.	ALL
4.	Inconsistent behaviour in loading J1939 DTCs (Vendor ECUs) in Diagnose tab.	ALL
5.	Product connection is taking time when connecting with non-Volvo adapter (Nexiq3) Note: Applicable to North America	VTNA RT MACK
6.	Tech Tool crashes when trying to exit 3690-07-03-02 Wireless sensor gateway (WSGW), calibration operation. Note: Applicable only to North America model VN (4).	VTC
7.	Under test operation 87923-3 Cab Heating Circuit Components, <ul style="list-style-type: none">• Graph readout for Cab climate coolant pump speed is missing. However, there is a digital readout on the right-hand side.• If the truck does not have the solenoid valve for the de-aeration (air bleeding), then the air bleed valve position will return "Not available"• Ambiguous status phrases for Cab coolant direction three-way valve position. ("Short circuit", "Mix circuit" and "Long circuit" will be replaced by "Short loop", "Mix loop" and "Long loop" respectively)• Wrong Component location illustration for the water valve stepper motor in Selection C.	VTC (FHE, FME)



Issue-1: Tech Tool installation progress bar is frozen during Client Update.

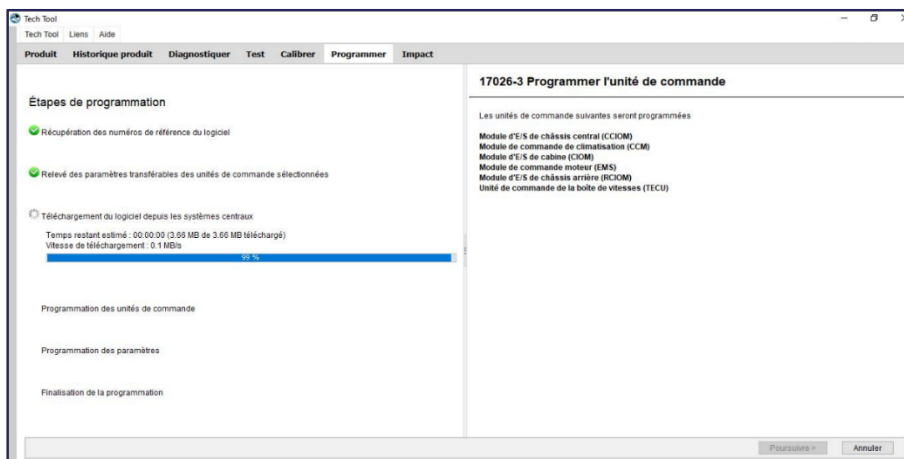
Cause: Under Investigation.



Suggestion: Restart computer if the progress bar is frozen.

Issue-2: While programming, the software download might get stuck at 99%.

Cause: Under Investigation.

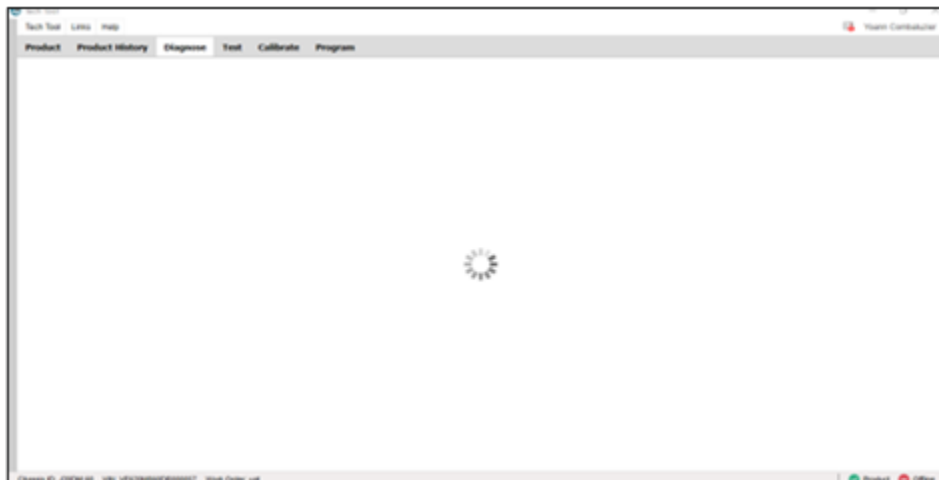


Suggestion: Use Quick Repair tool to resolve this issue. Refer [Video](#).



Issue-3: While switching between the tabs, Tech Tool might be frozen.

Cause: Under Investigation.



Suggestion: Kindly follow the below steps:

1. Ensure that there is a stable network as shown in the icon
2. Restart Tech Tool.
3. If not able to recover, restart the computer.



Issue-4: Inconsistent behavior in loading J1939 DTCs (Vendor ECUs) in Diagnose tab.

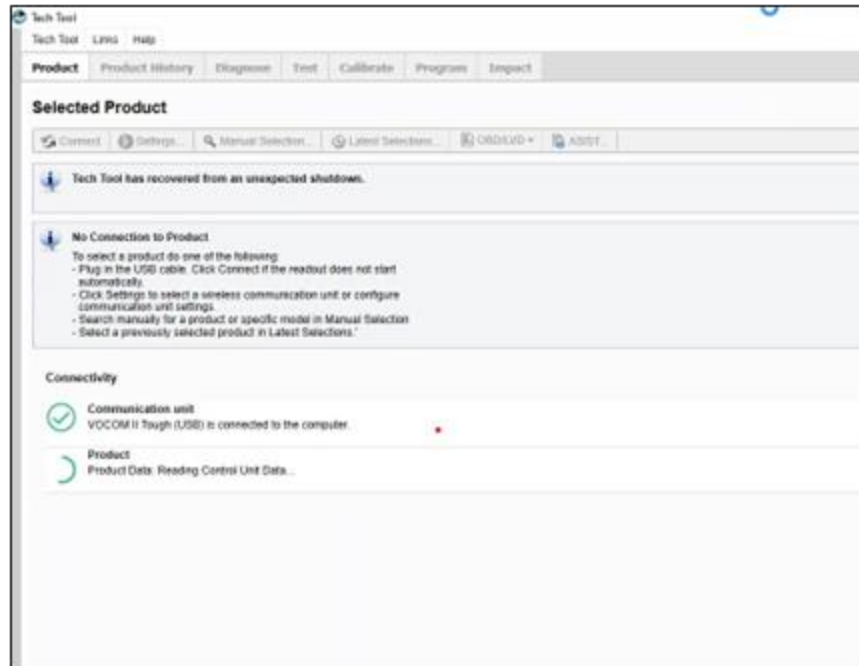
Cause: Under Investigation.

Suggestion: No workaround



Issue-5: Product connection is taking time when connecting with non-Volvo adapter (Nexiq3)

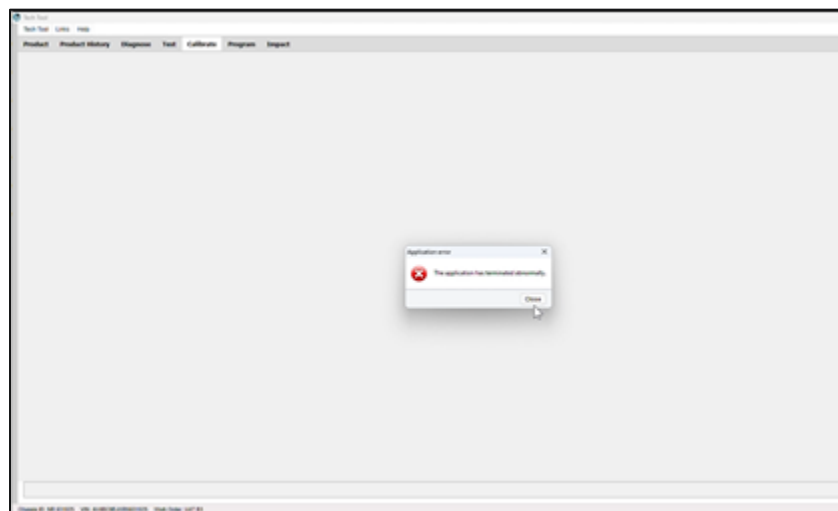
Cause: Under Investigation.



Suggestion: NA

Issue-6: Tech Tool crashes when exiting Wireless gateway calibration

Cause: Under Investigation.





Suggestion: Using Tech Tool Log Manager, stop the BAF service to end the current work session. Restart Tech Tool.

Note: For any issues & support, kindly use your normal channels.